

BACKER BLOCKS MUST BE LONG ENOUGH TO PERMIT REQUIRED NAILING WITHOUT SPLITTING.

SERIES	THICKNESS*	MIN. DEPTH**
PJ140 & PJ160	1"	5 1/2"
PJ180 & PJ190	1 1/2"	7 1/4"

\*MIN GRADE BACKER BLOCK SHALL BE UTILITY GRADE SPF (SOUTH) OR BETTER FOR SOLID SAWN LUMBER AND SHALL BE RATED SHEATHING GRADE FOR WOOD STRUCTURAL PANELS.

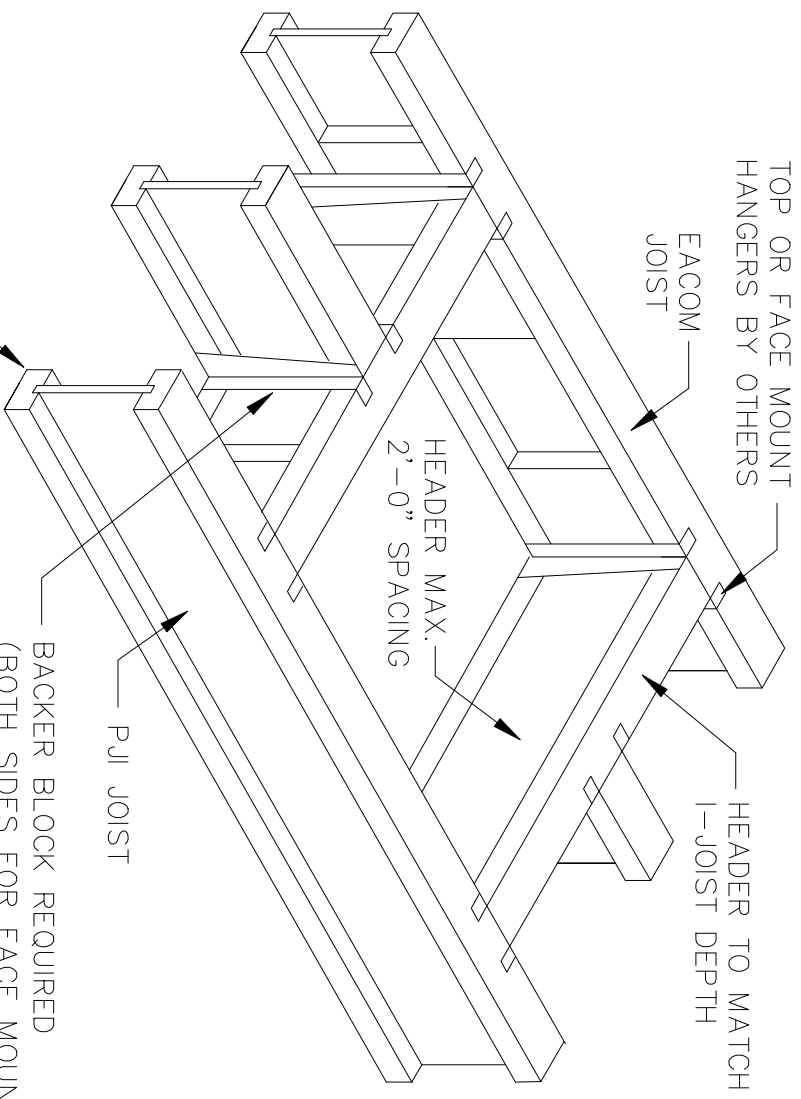
\*\*FOR FACE MOUNT HANGERS, USE NET JOIST DEPTH MINUS 1 1/4" FOR JOISTS WITH 1 1/2" THICK FLANGES

ALL GLUED AND NAILED

REPAIR DETAIL FOR JOIST @ MIDSPAN DAMAGE WHERE OBSTRUCTION CAN NOT BE MOVED

NOTE:  
 DAMAGE TO I-JOIST FLANGE AND/OR WEB CAN CAUSE FAILURE OF FLOOR SYSTEM. SPAN, SPACING AND LOADING AS WELL AS EXTENT AND LOCATION OF DAMAGE ALL AFFECT THE REPAIR REQUIRED.  
 EACH CASE SHALL BE REVIEWED.

CALCULATION TO SHOW PARALLEL JOISTS CAN SUPPORT POINT LOAD FOR HEADER MUST BE COMPLETED



JOIST MIDSPAN  
 HEADER DETAIL

FOR HANGER CAPACITY SEE HANGER MAUFACTURES RECOMMENDATIONS. VERIFY CAPACITY TO SUPPORT CONCENTRATED LOADS